

Purified Anti-Human TCR γ/δ Antibody[B1], Functional Grade

catalog number: E-AB-F11450

Note: *Centrifuge before opening to ensure complete recovery of vial contents.*

Description

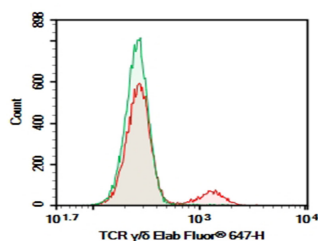
Reactivity	Human
Immunogen	Recombinant Human TCR γ/δ protein
Host	Mouse
Isotype	Mouse IgG1, κ
Clone	B1
Purification	>98%, Protein A/G purified
Buffer	Sterile PBS, pH 7.2. < 1.0 EU per mg of the antibody as determined by the LAL method

Applications

Recommended Dilution

FCM	2 $\mu\text{g}/\text{mL}$ (0.5×10^6 - 1×10^6 cells)
FA	Reported in the literature
Block	Reported in the literature

Data



Human peripheral blood lymphocytes were stained with 0.2 μg Purified Anti-Human TCR γ/δ Antibody[B1], Functional Grade (Right) and 0.2 μg Mouse IgG1, κ Isotype Control (Left), followed by Elab Fluor® 647-conjugated Goat Anti-Mouse IgG Secondary Antibody.

Preparation & Storage

Storage	Store at 4°C valid for 12 months or -20°C valid for long term storage, avoid freeze / thaw cycles. This preparation contains no preservatives, thus it should be handled under aseptic conditions.
Shipping	Ice bag

Background

For Research Use Only

T cell receptor (TCR) is a heterodimer consisting of an α and a β chain (TCR α/β) or a γ and a δ chain (TCR γ/δ). TCR γ/δ is involved in the recognition of certain bacterial, self-CD1 molecule, and tumor antigens bound to MHC class I. The γ/δ TCR associates with CD3 and is expressed on a subset of T cells found in the thymus, the intestinal epithelium, and the peripheral lymphoid tissues and peritoneum. Most γ/δ T cells are CD4-/CD8-, some are CD8+. T cells expressing the γ/δ TCR have been shown to play a role in oral tolerance, innate immune response for some tumor cells, and autoimmune disease. It has been reported that γ/δ T cells also play a principal role in antigen presentation.

None (Azide-Free, Low Endotoxin) are perfectly suited to be used in culture or in vivo (for nonhuman studies) for functional assays blocking, neutralizing, activation or depletion where the presence of azide may damage cells or exogenous endotoxin may signal or activate cells.

Application References

Correia DV, et al. Blood. 2011 Aug;118:992. Zhang Y, et al. Nat Commun. 2024;7265:15.